

QUITE FIRM

LAURENCE COTTLE

INTRO

Measures 1-2 of the Intro section. The music is in bass clef, 4/4 time, and D major. It features a melodic line with eighth and sixteenth notes, including accents and slurs.

3

Measures 3-4 of the Groove section. Measure 3 is a whole rest. Measure 4 begins with a double bar line and contains a melodic line with eighth notes and slurs.

5

Measures 5-6 of the Groove section. Measure 5 contains a complex melodic line with eighth notes and slurs. Measure 6 continues the melodic line with eighth notes and slurs.

7

Measures 7-8 of the Groove section. Measure 7 contains a complex melodic line with eighth notes and slurs. Measure 8 continues the melodic line with eighth notes and slurs.

9

Measures 9-10 of the Groove section. Measure 9 contains a complex melodic line with eighth notes and slurs. Measure 10 continues the melodic line with eighth notes and slurs.

11

Measures 11-12 of the Groove section. Measure 11 contains a complex melodic line with eighth notes and slurs. Measure 12 continues the melodic line with eighth notes and slurs.

HEAD

13

Measures 13-14 of the Groove section. Measure 13 contains a complex melodic line with eighth notes and slurs. Measure 14 continues the melodic line with eighth notes and slurs.

15

Measures 15-16 of the Groove section. Measure 15 contains a complex melodic line with eighth notes and slurs. Measure 16 continues the melodic line with eighth notes and slurs.

17

Measure 17 of the Groove section. It contains a complex melodic line with eighth notes and slurs, ending the piece.

2 19



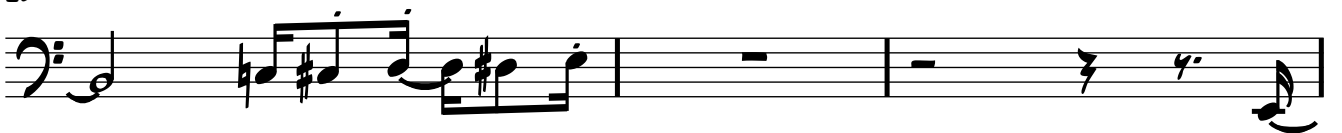
21



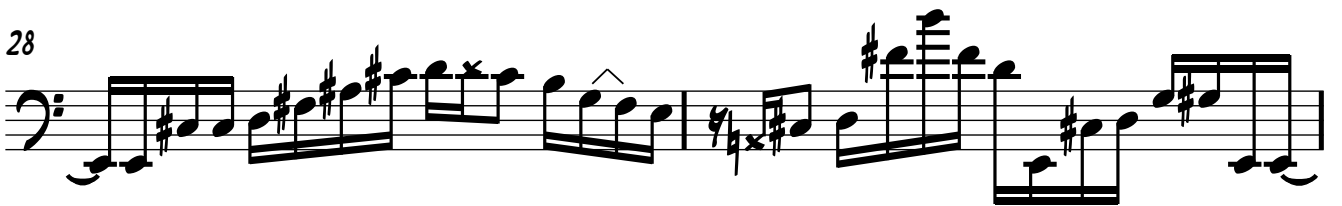
23



25



28



30



32



34



36



38



40

3

